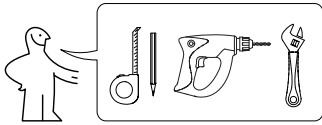


# BANNER (REINFORCED)

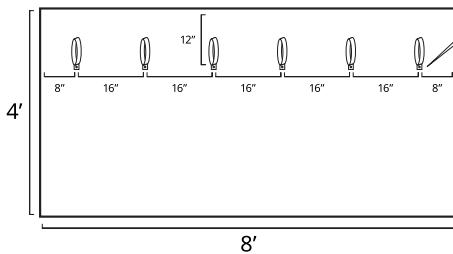
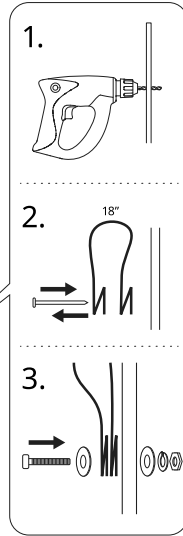


## Materials

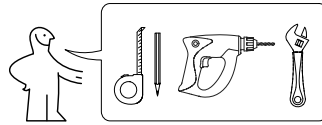
- 4' x 8' plywood sheathing (not OSB), 1/2" or 3/8" thick
- (6x) 18" strips of nylon webbing, 1" width or greater
- (6x) 1/4" diameter, 1 1/4" length bolt
- (12x) 1/4" flat washer
- (6x) 1/4" locking washer
- (6x) 1/4" hex nut

## Instructions

1. Drill 3/8" diameter holes, 12" from top of sheet, 8" from side, repeating every 16".
2. For each hole, fold a loop of nylon webbing as shown. Pay close attention to exactly how the ends fold. Use a nail, pencil, drill bit, or other small object to pierce a small hole through the folded webbing where you will insert the bolt.
3. Place a flat washer on the bolt and insert the bolt through the webbing and the pre-drilled holes. Place a flat washer, locking washer, and hex nut onto the bolt and tighten.
4. Paint something revolutionary on the front and carry with 2 or 3 people.



# BANNER (REINFORCED)

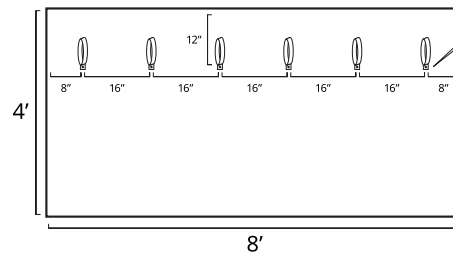
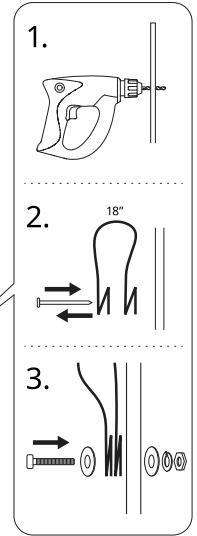


## Materials

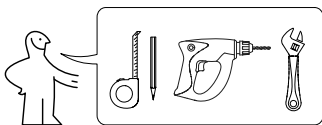
- 4' x 8' plywood sheathing (not OSB), 1/2" or 3/8" thick
- (6x) 18" strips of nylon webbing, 1" width or greater
- (6x) 1/4" diameter, 1 1/4" length bolt
- (12x) 1/4" flat washer
- (6x) 1/4" locking washer
- (6x) 1/4" hex nut

## Instructions

1. Drill 3/8" diameter holes, 12" from top of sheet, 8" from side, repeating every 16".
2. For each hole, fold a loop of nylon webbing as shown. Pay close attention to exactly how the ends fold. Use a nail, pencil, drill bit, or other small object to pierce a small hole through the folded webbing where you will insert the bolt.
3. Place a flat washer on the bolt and insert the bolt through the webbing and the pre-drilled holes. Place a flat washer, locking washer, and hex nut onto the bolt and tighten.
4. Paint something revolutionary on the front and carry with 2 or 3 people.



# BANNER (REINFORCED)

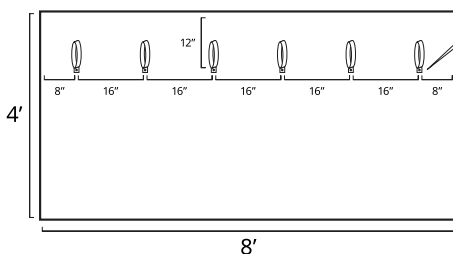
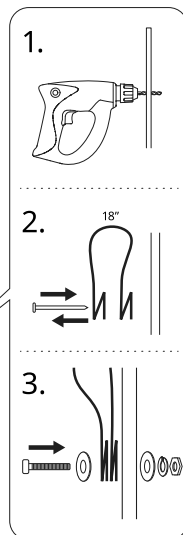


## Materials

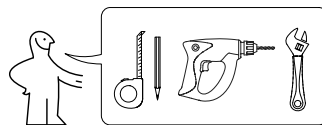
- 4' x 8' plywood sheathing (not OSB), 1/2" or 3/8" thick
- (6x) 18" strips of nylon webbing, 1" width or greater
- (6x) 1/4" diameter, 1 1/4" length bolt
- (12x) 1/4" flat washer
- (6x) 1/4" locking washer
- (6x) 1/4" hex nut

## Instructions

1. Drill 3/8" diameter holes, 12" from top of sheet, 8" from side, repeating every 16".
2. For each hole, fold a loop of nylon webbing as shown. Pay close attention to exactly how the ends fold. Use a nail, pencil, drill bit, or other small object to pierce a small hole through the folded webbing where you will insert the bolt.
3. Place a flat washer on the bolt and insert the bolt through the webbing and the pre-drilled holes. Place a flat washer, locking washer, and hex nut onto the bolt and tighten.
4. Paint something revolutionary on the front and carry with 2 or 3 people.



# BANNER (REINFORCED)



## Materials

- 4' x 8' plywood sheathing (not OSB), 1/2" or 3/8" thick
- (6x) 18" strips of nylon webbing, 1" width or greater
- (6x) 1/4" diameter, 1 1/4" length bolt
- (12x) 1/4" flat washer
- (6x) 1/4" locking washer
- (6x) 1/4" hex nut

## Instructions

1. Drill 3/8" diameter holes, 12" from top of sheet, 8" from side, repeating every 16".
2. For each hole, fold a loop of nylon webbing as shown. Pay close attention to exactly how the ends fold. Use a nail, pencil, drill bit, or other small object to pierce a small hole through the folded webbing where you will insert the bolt.
3. Place a flat washer on the bolt and insert the bolt through the webbing and the pre-drilled holes. Place a flat washer, locking washer, and hex nut onto the bolt and tighten.
4. Paint something revolutionary on the front and carry with 2 or 3 people.

